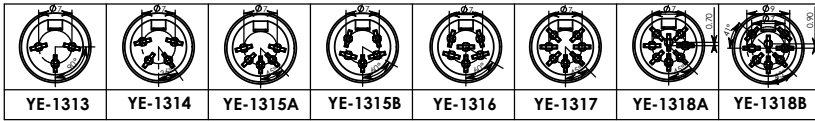
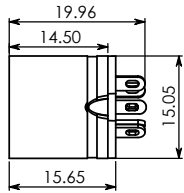
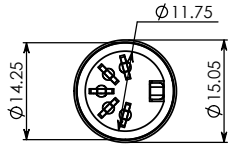
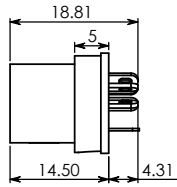


YE-131X DIN CABLE JACK MOLDING TYPE



MATERIAL :

1. SHIELD COVER : BRASS NICKEL PTD.
2. HOUSING : ABS
3. GND CONTACTOR : PHOSPHOR BRONZE NICKEL PTD.
4. TERMINALS : COPPER NICKEL PTD.

SPECIFICATION :

Rating : 100V AC 1A max.

Contact Resistance :

Pins 30mΩ max.

Shell 50mΩ max.

Insulation Resistance :

100MΩ at 500V DC min.

Voltage Withstand :

250V AC for 1 minute



YE-1313



YE-1314



YE-1315A



YE-1315B



YE-1316



YE-1317



YE-1318A



YE-1318B